

LC100 RECESS TOOL

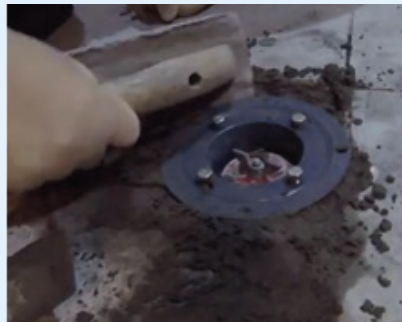
Save time and effort while getting a cleaner result with the Holer LC100 recess tool!

Recessing a concrete floor to fit a shower leak control flange has never been easier, simply follow the steps below:

1. Core drill the required hole diameter into concrete floor (diameter 107mm +/-)
2. Remove concrete core
3. Connect the Recess Tool LC100 to diamond core drill motor (rig mounted only)
4. Start the process and mill out the recess (bottom of tool provides steady guide)



NO MORE:



INSTEAD:



MADE IN
NEW ZEALAND

