

Automatic drill system BA 50



*easy assembly with
adapter plate and
tension spring*

water protection class IP 55

| Technical Data: | Type | BA 50 |
|-------------------|-------|------------------|
| Rated Voltage | V | 48 |
| Feed Force | N | 5000 |
| Feed Rate | m/min | 0 - 0,4 |
| Weight | kg | 3,5 |
| Mode of operation | | automatic/manual |

My name is **BA 50**, I am the new automatic drill system of WEKA.

My job is to relieve the operator of work which I do highly efficient and very comfortable. The adapter flange can be easily installed at the respective drill rig (image 2). For this the feed case of the drill rig will be modified slightly which is indicated by the additional marking BA (e.g. KS50BA). In just a few steps my motor (image 1) is attached to the drill rig within seconds (image 3 and 4). Now I have to be connected to my friend, the Mammut SR25BA/38BA or the Jumbo SR65BA/68BA/75BA via a plug connector. These machines manage my control - now I'm ready.

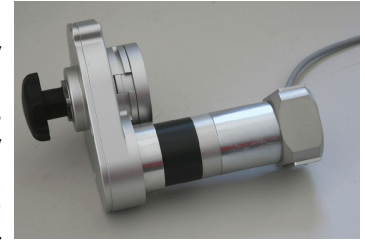


Image 1

Because my friends manage me, I do not need any additional controls in a separate casing. This is why there is no additional tangled mess of cables. I also do not have additional operating elements because I am intelligently controlled by my friends.

Core Drill

As already mentioned I work together with the SR25/38 and the SR65/68/75. My control system will be integrated in these machines and a small connector will be attached. The implementation of these features is indicated on the name plate by the additional marking BA (e.g. SR25BA).

I only work together with these machines, because they are intelligent enough in order to meet my needs. As an option these machines are available with integrated water stop. In addition to the manually adjustable ball valve the machine starts / stops water flow automatically when you start and stop the machine.

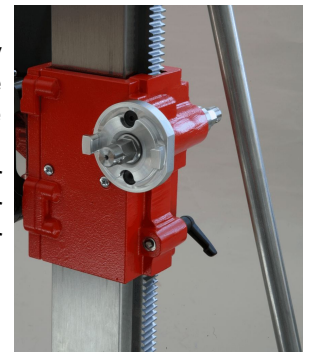


Image 2

Drilling process

After my motor has been attached to the drill rig and I was connected to the SR machine the operator positions the drill bit a few millimeters above the surface to be drilled in by means of the hand wheel, mechanically engages the feed unit and presses the start button of the SR machine for two seconds and I begin to work.

The feed rate is chosen automatically together with my friends. In the initial setup I run with 90% drilling performance. If the operator does not want to drill under full load he can easily reduce the drilling performance to 70% by pressing the start button once again.

I gently start drilling and carefully increase the feed rate until the load limit is reached. Of course I sense every concrete reinforcement and adapt my feed rate to the performance of the machine. If my friends are overloaded my feed rate is automatically reduced. I also feel if the drill bit has gone through the material when drilling a clearance hole and switch off. If only a blind hole shall be drilled my operator adjusts a stop according to the required drilling depth. As soon as I recognize the stop I switch off.

I also sense excessive vibrations, for example if the drill bit does not cut properly and switch of the machine.

As discussed I switch off when I'm finished. I do not automatically pull out the drill bit because it takes longer than by hand and often harms the drill bit and diamond segments. My operator simply uncouples the feed unit with one movement and I can be moved backwards manually.



Image 3

Advantages

- ◆ I am very easy to handle as I am thoroughly regulated and controlled by my intelligent electronic.
- ◆ While I am working my operator can do other jobs, or of course relax and watch me working.
- ◆ Because of my super quick assembly I am quickly ready for use.
- ◆ Both drill rig and SR machine can be operated manually or automatically by means of my mechanical coupling without disassembling me.

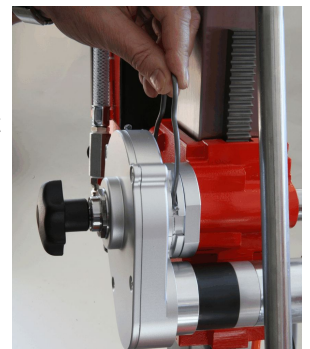


Image 4

WEKA Elektrowerkzeuge KG

Auf der Höhe 20, D 75387 Neubulach / Germany

Telefon: +49 7053 96816-0 · Telefax: +49 7053 3138

Internet: www.weka-elektrowerkzeuge.de · Email: weka@weka-elektrowerkzeuge.de