

INTRODUCTION

Thank you for choosing Holer Industrial Vacuum Cleaner, a high-quality product based on the newest state-of-the-art technology. We hope that this device will be to your satisfaction and meet your expectations. We are continuously striving to improve our products in our product segment and will continue to supply the market with new equipment.

NOTICE!

1. This instruction is only for PS500 pre separator.
2. The pre separator is intended for pre-separating dry, not combustible dust. The pre-separator must be attached to a vacuum cleaner with right capacity. When the vacuum cleaner is started, the dust-laden air is then sucked through the inlet valve at high speed via the suction hose. The air is slowed down by the cyclone and coarse dust particles are separated out, partly by centrifugal force and partly by gravity. Air and finer particles then lift through the tank and through the hoses attached to the vacuum cleaner. The separated dust accumulates in the cyclone until the vacuum cleaner is switched off, when it drops through the bottom flap into the plastic bag.
3. Please pay particular attention to the safety regulations and safety instructions
4. Read the complete instruction manual before using.
5. All spare parts and accessories used with this device must be those specified by Holer.

Environmental protection

The packaging material can be recycled. Please do not throw the packaging material into household waste; please send it for recycling.

Old devices contain valuable materials that can be recycled; these should be sent for recycling. Batteries, oil, and similar substances must not enter the environment. Please dispose of your old devices using appropriate collection systems.

1. SAFETY INSTRUCTIONS

When using an electrical appliance, basic precautions should always be followed, including the following:

WARNING – To reduce the risk of fire, electric shock or injury:

- Cables damaged through crushing or splitting can be dangerous if used and should be replaced immediately. Risk of personal injury.
- Make sure the assembly area is firm, so the dust extractor does not tip over. Risk of personal and material injury.
- Risk of pinching when handling the toggle fasteners.
- The machine must not be used in environments where explosive gases may be present. Serious risk of explosion.
- Improper connection of the equipment-grounding conductor can result in a risk of electrical shock. Check with a qualified electrician or service person if you are in doubt as to whether the outlet is properly grounded. Do not modify the plug provided with the machine. If it will not fit the outlet. Have a proper outlet installed by a qualified electrician.
- Before using the machine, make sure that the power & voltage corresponds with the voltage shown on the machines rating plate.
- Do not leave machine when plugged in. Unplug cord from outlet when not in use and before cleaning or servicing machine.
- Do not use outdoors or on wet surface, this machine is for indoor and dry use only.
- Do not allow to use as a toy. Close attention is necessary when used by or near children.
- Use only as described in this manual. Use only manufacturers recommended attachments.
- Operators shall be adequately instructed on the use of the machine
- This machine is not intended for use by persons (including children) with reduced physical, sensory or mental capabilities, or lack of experience and knowledge.
- Do not use with damaged cord or plug. If the machine is not working as it should, has been dropped, damaged, left outdoors or dropped in water. Make sure it is repaired by a qualified person.
- Do not pull or carry by cord, use cord as handle, close a door on cord, or pull cord around sharp edges or corners. Do not run the machine over cord. Keep cord away from heated surfaces.
- Do not unplug by pulling on cord. To unplug, grasp the plug. Not the cord.
- Do not handle plug or machine with wet hands.
- Regularly inspect cord and plug for damage. If cord is damaged, it must be replaced by a qualified person in order to avoid hazard.
- Do not put any object into openings. Do not use with any opening blocked (accept during filter cleaning procedure). Keep free of dust, hair and anything that may reduce airflow.
- Keep hair, loose clothing, fingers and all parts of body away from openings and moving parts.
- Turn off all controls before unplugging.
- Do not use to pick up flammable or combustible liquids, such as gasoline, or use in areas where they may be present.
- Do not pick up any type of liquids.
- Do not pick up anything that is burning or smoking, such as cigarettes, matches or hot ashes.
- Use extra care when cleaning on stairs.
- Do not use without dust bag and/or filters in place. Replace collection system and/or filters as described in manual.
- If using an extension cord make sure the cord rating is suitable for this machine.
- Do not modify machine from its original design.
- Keep children and unauthorized persons away from machine when in use.
- All repairs must be performed by a qualified service person. Use only manufacturer-supplied or equivalent replacement parts.
- Do not expose machine to rain or moisture. Store indoors only.
- Connect to a properly grounded outlet only. See grounding instructions.

2.UNPACKING

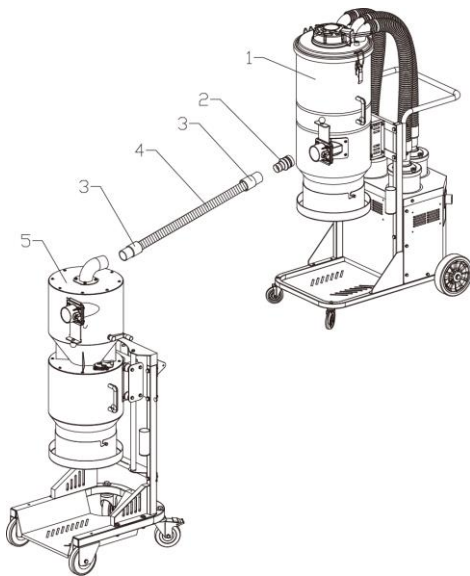
When unpacking the machine, please check that the following accessories are included:

- ✓ D50 hose *1Meter
- ✓ D50 hose ends*2PCS
- ✓ D70/50 reducer

If any of the above-mentioned parts are missing, please contact your local distributor or our sales representative. For models that do not already have the front casters assembled due to packaging limitations. Assemble the front casters using the using bolt or nut and washer that are included in the package depending on your application. Protect the environment:

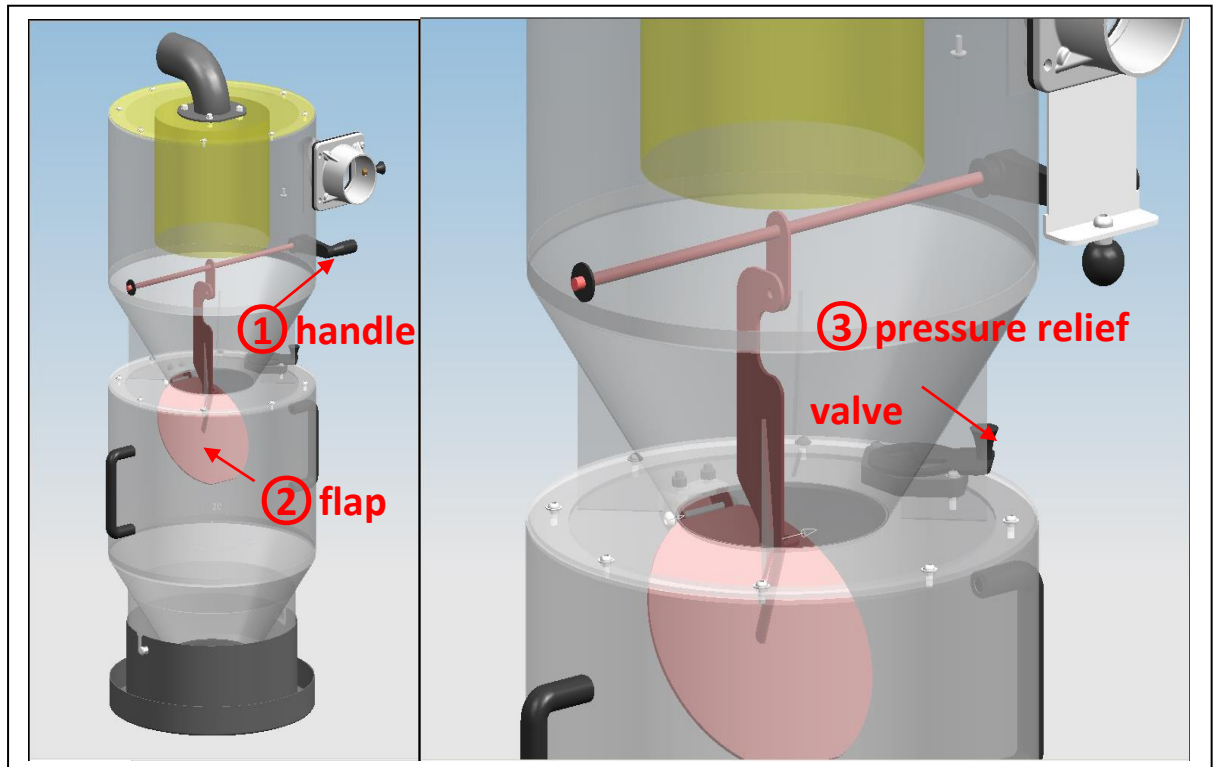
Please dispose of packaging materials and used machine components in an environmentally safe way according to local disposal regulations. Always remember to recycle.

How to connect the PS500 and vacuum cleaner?

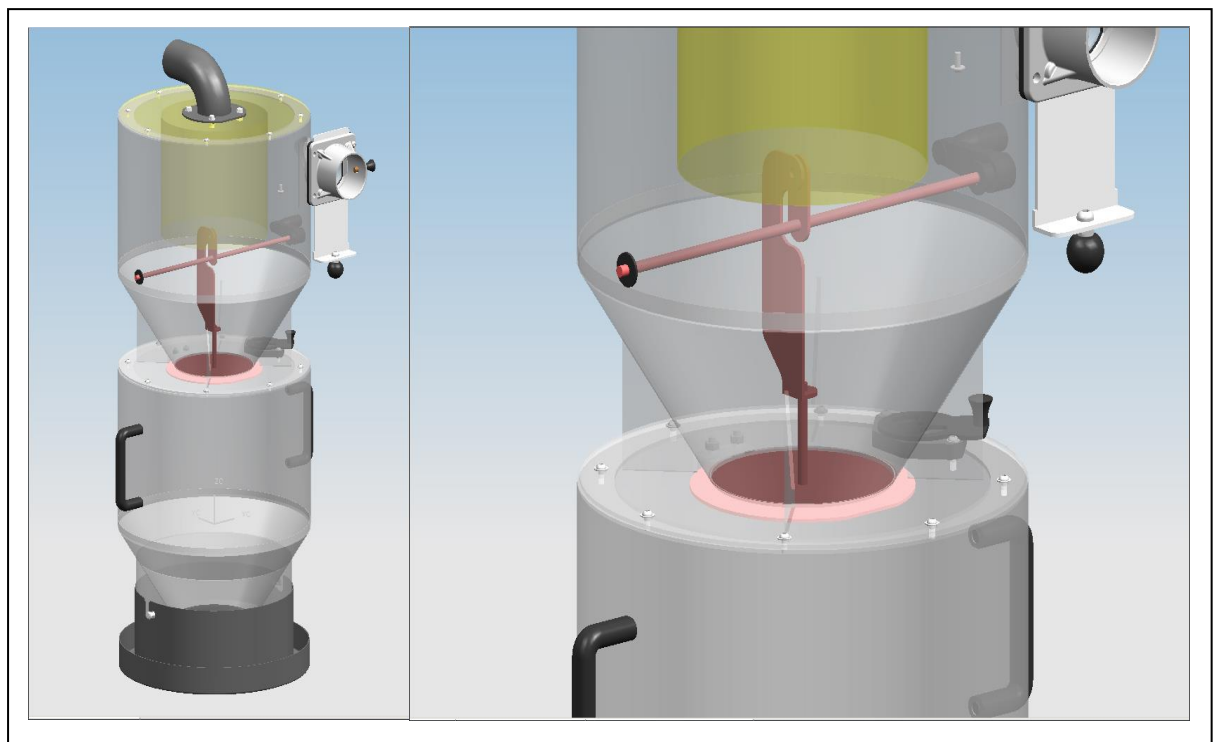


1. Dust extractor
2. D70/50 reducer
3. D50 hose cuff
4. D50 hose cuff
5. PS500 Separator (outlet 50mm)

3. HOW TO OPERATE



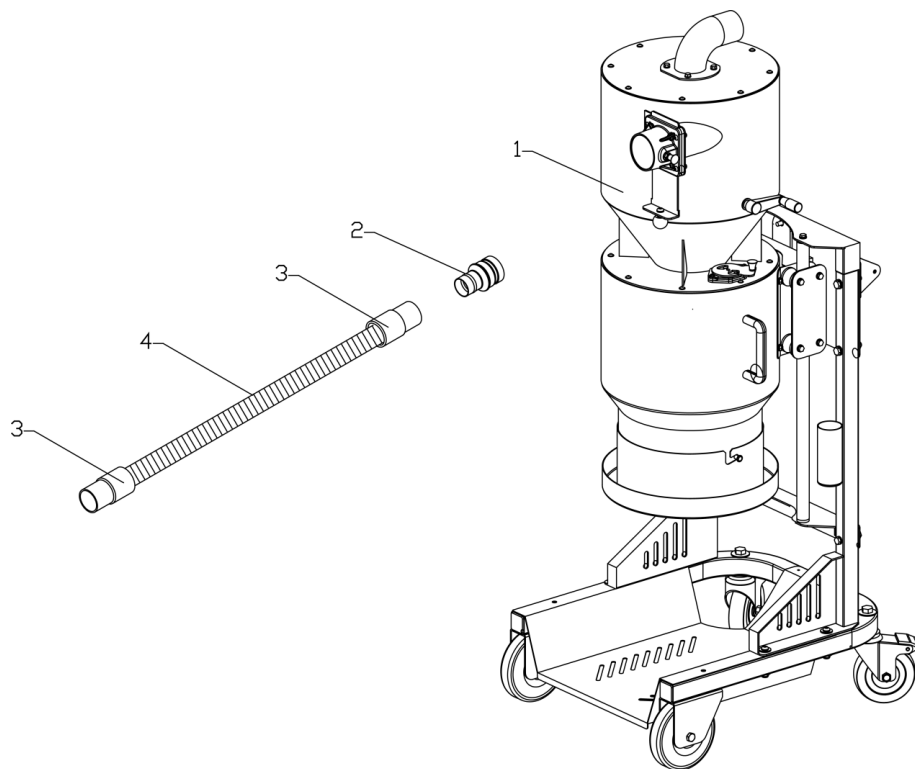
In normal working status, the flap is opening, the dust will drop down to the barrel below



When changing bags, turning the handle ① to "Bag replacing" position, close the flap ②. Then open the pressure relief valve③, the dust in the barrel will drop down into the bags. Replace a new bag, while vacuum keeps working.

After the bag replacing finished, turn the handle to the " Vacuum working" position, the flap in the barrel will open. Close the pressure relief valve③, the vacuum keeps working.

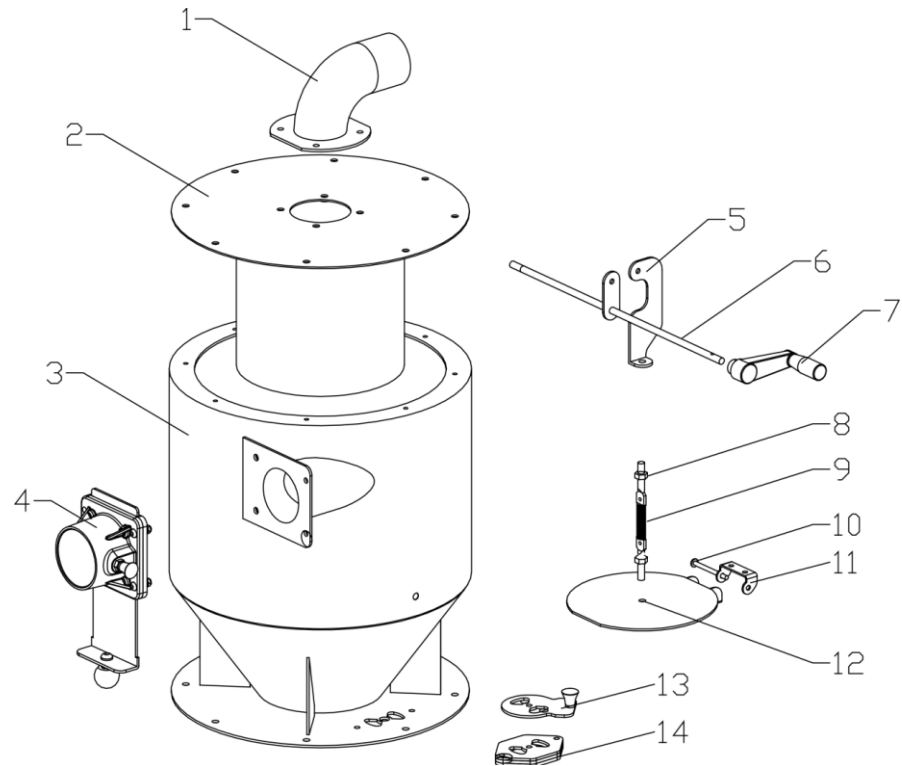
4. PACKING LIST



S/N	P/N	Description	Quantity	Dimension
1		PS500 separator	1 PC	
2	C2031	D70/50 reducer	1 PC	
3	S8006	D50 hose cuff	2 PCS	D50
4	S8007	D50 EVA hose	1 METER	D50

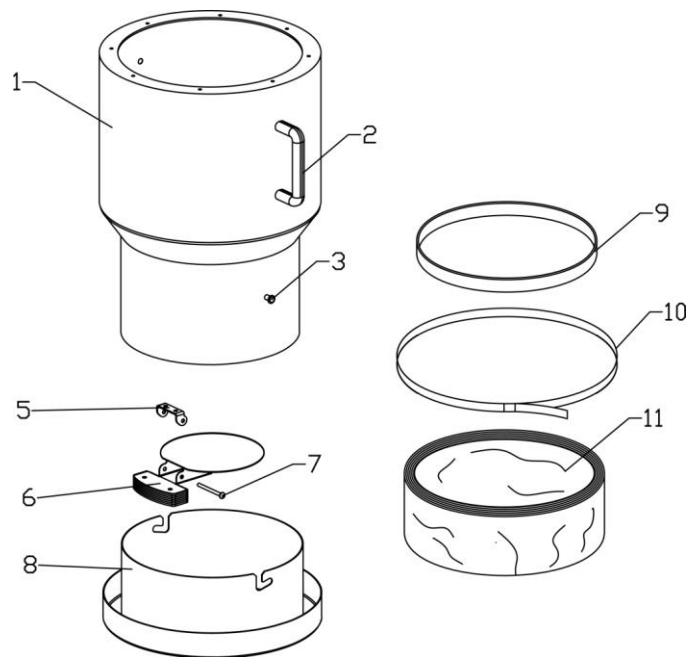
5. Exploded views

Cyclone top hat kit



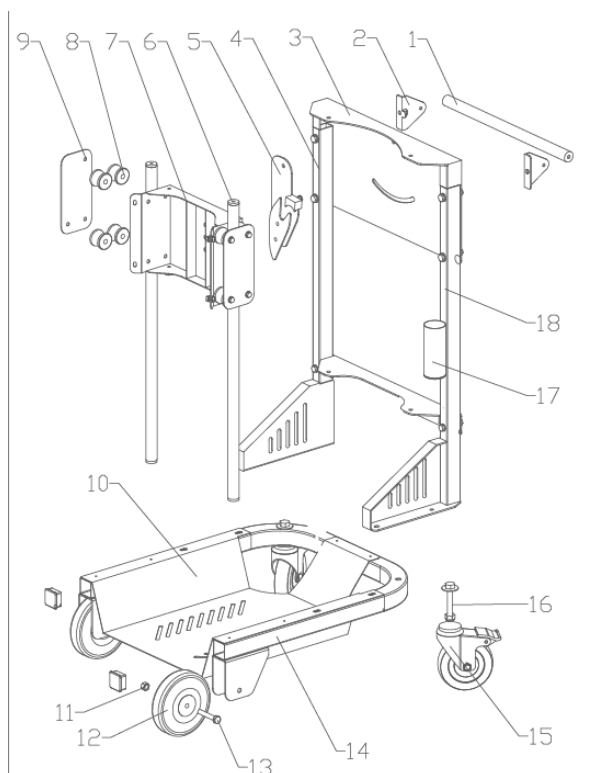
S/N	P/N	Description	Quantity	Dimension
1	C2172	D50 round flanged bend	1	
2	C2347	Cyclone inner drum	1	
3	C2348	PS500 upper drum	1	
4	B0008	D70 inlet assembly	1	
5	C2351	PS500 accessory-2	1	
6	C2350	M8 link rod of cranking bar	1	
7	S9043	M8 cranking bar	1	
8	S9045	Pull spring with hook	1	2*12*55
9	S9046	Flat head screw	2	M8*45
10	S0028	Hexagon bolt	1	M6*60
11	C2092	Flap holder	1	
12	C2352	BB01 Flapping board	1	
13	C2354	PS500 accessory-5	1	
14	C2353	PS500 accessory-4	1	

PS500 dustbin kit



S/N	P/N	Description	Qty	Dimension	Note
1	C2349	PS500 dust drum	1		
2	S0061	Handle	2		
3	S0089	Nut	2	M8*15	
5	C2092	Flap holder	1		
6	C2090	Flap assembly kit	1		
7	S0028	Hexagon bolt	2	M6*60	
8	C2084	Continuous bag holder packing	1		
9	S8036	Rubber ring	1		
10	S0090	Belt packing	1		
11	S8035	Continuous folding bag	1		Attached nylon tape

PS500 supporting frame



S/N	P/N	Description	Qty	Dimension	Note
1	C2082	Handrail	1		
2	C2243	Handrail bracket	2		
3	C2095	Upper bracket of slide bar	1		
4	C2242	Right stand column	1		
5	C2146	Lifting hook	1		
6	C2097	Slide bar	2		
7	C2087	Drum support	1		
8	C2045	Tube pulley	8		
9	C2101	Pulley mounted plate	2		
10	C2164	Dust bag support plate	1		
11	S0015	Hexagon nut	2	M10	
12	S9009	6'' rear wheel	2		
13	S0032	Bolt	2	M10*60	
14	C2088	bed plate	1		
15	S9008	5''universal band wheel	2		
16	S0034	Bolt	2	M12*75	
17	C2083	Nylon cable tape storage container	1		
18	C2241	Left stand column	1		